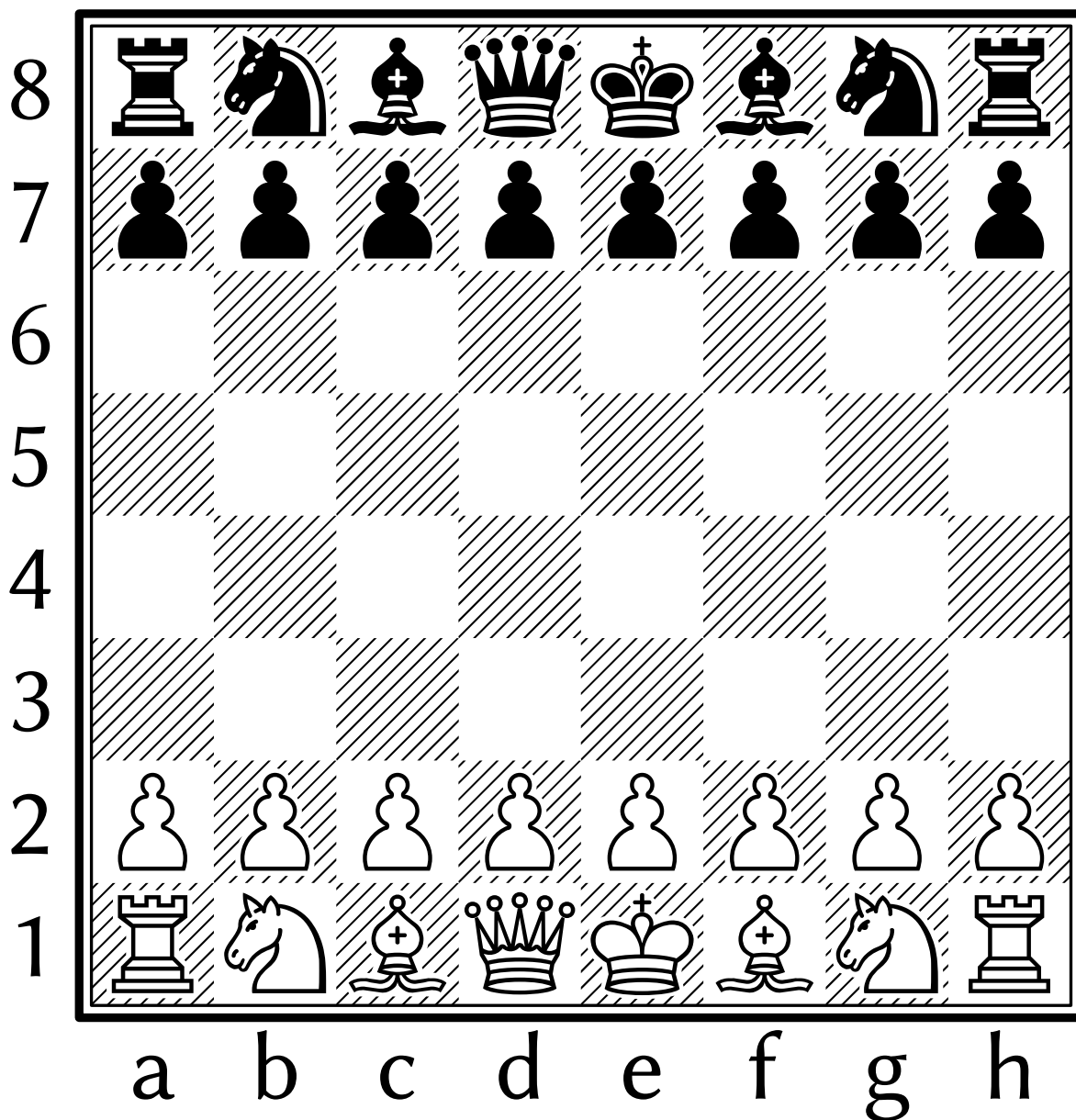
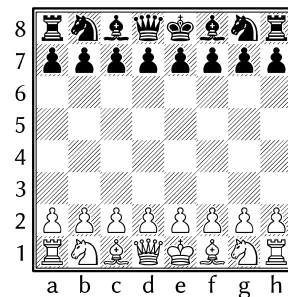


; Typesetting chessboard by notation in LibreOffice 4
; Merida Unicode Chess font + instructions for installation:
; http://mip.noekeon.org/HTMLTTChess/chess_merida_unicode.html
; Click on the Start icon of (View » Toolbars ») Logo toolbar.
; Export as PDF in Writer or convert it to curve in Draw to
; avoid font dependency (PDF format keeps hinting, too).



```

; usage: chessboard size_in_pt white_figures black_figures
T0 chessboard size white black
PICTURE [
  s = size * 0.8 ; caption size
  font1 = "Linux Biolinum G" ; caption font
  font2 = "Chess Merida Unicode" ; chess font
  PENDOWN PENCOLOR "BLACK"
  FILLCOLOR "INVISIBLE" PENSIZE size*0.07 SQUARE size*8.2
  PENSIZE size/40 FILLCOLOR "WHITE" SQUARE size*8
  PENUP FD size*3.5 LT 90 FD size*4.5 RT 90
  PENUP PENCOLOR "INVISIBLE" FILLCOLOR "INVISIBLE" ; square for figures
  data = {0: {"K": "♔", "Q": "♕", "R": "♖", "B": "♗", "N": "♘", " ": "~",
    "♙", "X": "XX", "O": "••"}, 1: {"K": "♚", "Q": "♛", "R": "♜",
    "♝", "B": "♞", "N": "♟", " ": "♙", "X": "XX", "O": "••"}}
  FOR i IN "87654321" [
    FONTSIZE size*0.8 FONTFAMILY font1
    LABEL 9 - REPCOUNT RIGHT 90 FORWARD size LEFT 90
    FONTSIZE size FONTFAMILY font2
    FOR j IN "abcdefgh" [
      color = (REPCOUNT + 1 + INT i) % 2 ; color of the square
      what = white.find(j+i) ; search string, eg. "a8"
      IF what > -1 [
        LABEL data[color][(" " + white)[what]][0]
      ]
      what = black.find(j+i)
      IF what > -1 [
        LABEL data[color][(" " + black)[what]][1]
      ]
      IF color [ LABEL "██" ]
    ]
    RIGHT 90 FORWARD size LEFT 90
  ]
  LEFT 90 FORWARD size * 9 RIGHT 90 BACK size
]
FONTSIZE s FONTFAMILY font1
FOR i IN " abcdefgh" [ LABEL i RIGHT 90 FORWARD size LEFT 90 ]
]
END

CLEARSCREEN HOME HIDETURTLE
size = INT INPUT "Size of figures (pt):"
white = INPUT "White figures (Ra1 Kb2 Nc3 Qd4 h8 Xe5 Of6) or Enter:"
IF white = "" [
  chessboard size "Ra1 Nb1 Bc1 Qd1 Ke1 Bf1 Ng1 Rh1 a2 b2 c2 d2 e2 f2 g2 h2" ~
    "Ra8 Nb8 Bc8 Qd8 Ke8 Bf8 Ng8 Rh8 a7 b7 c7 d7 e7 f7 g7 h7"
] [
  black = INPUT "Black figures:"
  chessboard size white black
]

```