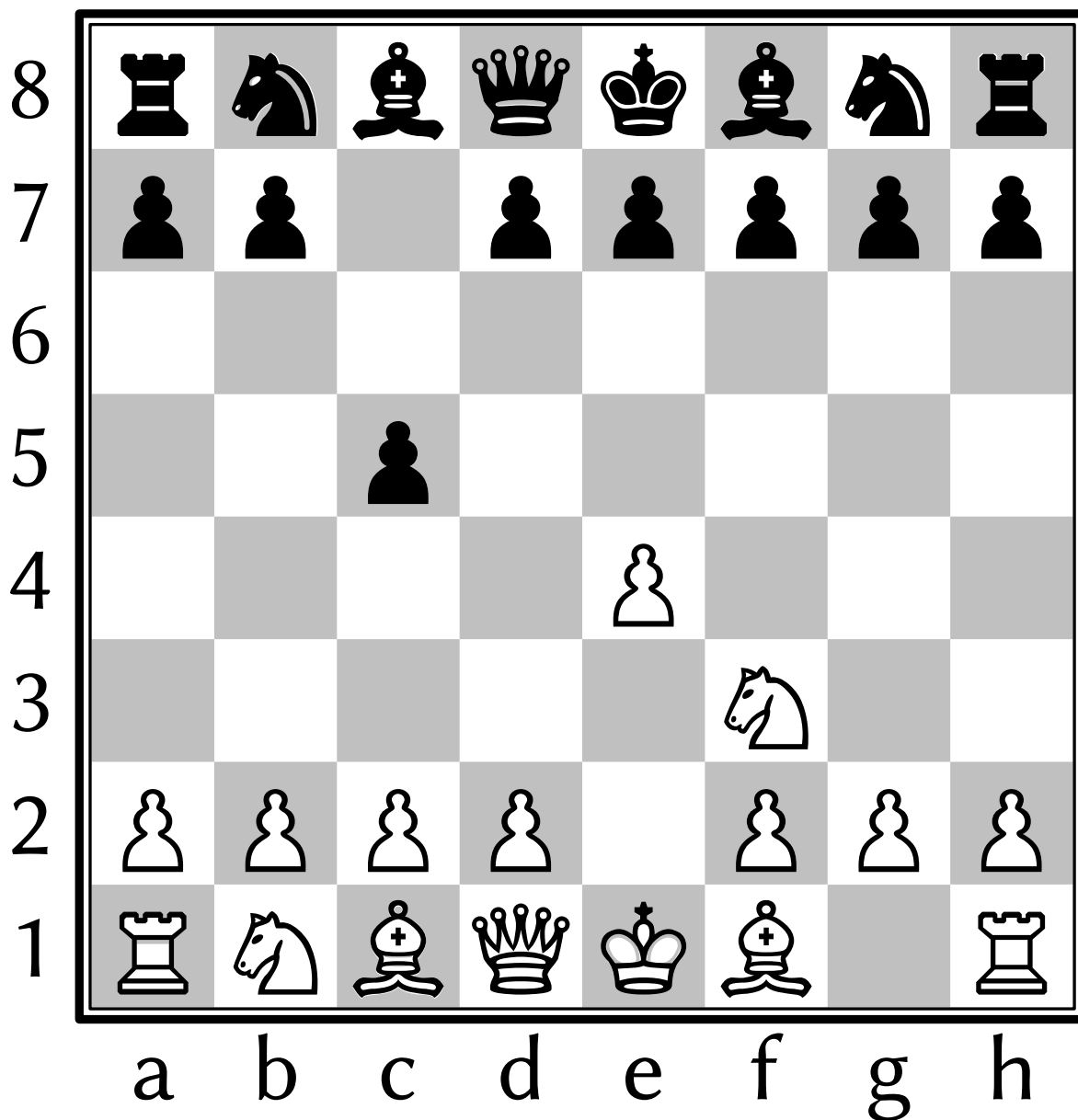
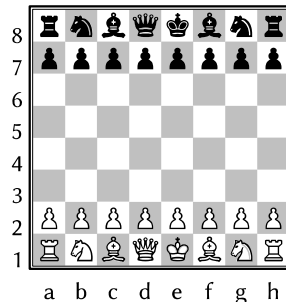


; Typesetting chessboard manually or by notation in LibreOffice 4  
 ; Click on the Start icon of the (View » Toolbars ») Logo toolbar.  
 ; Install FreeSerif font for better Unicode chess figures.  
 ; Export the document as PDF in Writer (or convert the picture  
 ; to curve in Draw) to avoid font dependency.  
 ; Group the result of the manual positioning: set the drawing  
 ; cursor mode (eg. select a figure), and drag a selection  
 ; frame around the chessboard, and click on the Group icon.



```

T0 chessboard size color1 color2
  FONTFAMILY "Linux Biolinum G" PENUP FILLCOLOR color2 SQUARE size*8
  FORWARD size*3.5 LEFT 90 FORWARD size*4.5 RIGHT 90 FILLCOLOR color1
  FOR i IN RANGE 8 [
    FONTSIZE size/1.3 LABEL 9 - REPCOUNT
    RIGHT 90 FORWARD size LEFT 90
    REPEAT 8 [
      if (i + REPCOUNT + 1) % 2 [ SQUARE size ]
      RIGHT 90 FORWARD size LEFT 90
    ]
    LEFT 90 FORWARD size * 9 RIGHT 90 BACK size
  ]
  FOR i IN "abcdefgh" [ LABEL i RIGHT 90 FORWARD size LEFT 90 ]
  FORWARD size*4.5 LEFT 90 FORWARD size*4.5 RIGHT 90 PENDOWN PENCOLOR "BLACK"
  FILLCOLOR "INVISIBLE" PENSIZE size*0.07 SQUARE size*8.2
  PENSIZE size/40 SQUARE size*8 + size/40
  PENUP FORWARD size*3.5 LEFT 90 FORWARD size*3.5 RIGHT 90

```

END

```

T0 figures size white black
  FONTSIZE size*1.15 FONTFAMILY "FreeSerif" ; free font with chess figures
  PENUP PENCOLOR "INVISIBLE" FILLCOLOR "INVISIBLE" ; square for figures
  data = {"K": "♔", "Q": "♚", "R": "♖", "B": "♘", "N": "♞", " ": "♠"}
  FOR i IN "87654321" [
    FOR j IN "abcdefgh" [
      what = white.find(j+i) ; search string, eg. "a8"
      IF what > -1 [
        k = data[(" " + white)[what]]
        figure = k[0]
        background = k[1]
      ]
      what = black.find(j+i)
      IF what > -1 [
        k = data[(" " + black)[what]]
        figure = k[1]
        background = k[0]
      ]
      IF what > -1 [ PICTURE [ ; figure from two squares
        SQUARE size FONTCOLOR "WHITE" TEXT background
        SQUARE size FONTCOLOR "BLACK" TEXT figure
      ] ]
      RIGHT 90 FORWARD size LEFT 90
    ]
    LEFT 90 FORWARD size * 8 RIGHT 90 BACK size
  ]

```

END

```

CLEARSCREEN HOME HIDETURTLE
size = INT INPUT "Size of figures (pt):"
white = INPUT "White (eg. Ra1 Kb2 Nc3 Qd4 h8) or Enter (manual pos.):"
IF white = "" [
  PICTURE [ chessboard size "SILVER" "WHITE" ]
  figures size "Ra1 Nb1 Bc1 Qd1 Ke1 Bf1 Ng1 Rh1 a2 b2 c2 d2 e2 f2 g2 h2" ~
    "Ra8 Nb8 Bc8 Qd8 Ke8 Bf8 Ng8 Rh8 a7 b7 c7 d7 e7 f7 g7 h7"
  PRINT "Move the table or the figures."
] [
  black = INPUT "Black figures:"
  PICTURE [ ; grouping the chessboard and the figures
    PICTURE [ chessboard size "SILVER" "WHITE" ]
    figures size white black
  ]
]

```